

GENERAL INFORMATION

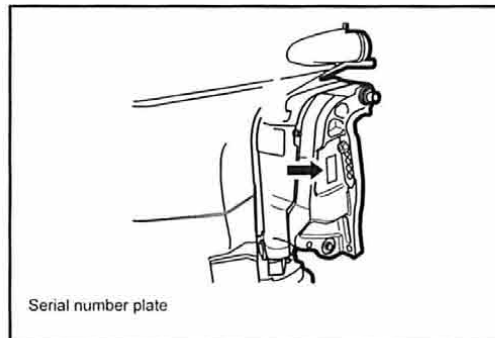
IDENTIFICATION NUMBER LOCATION

IDENTIFICATION NUMBER LOCATION

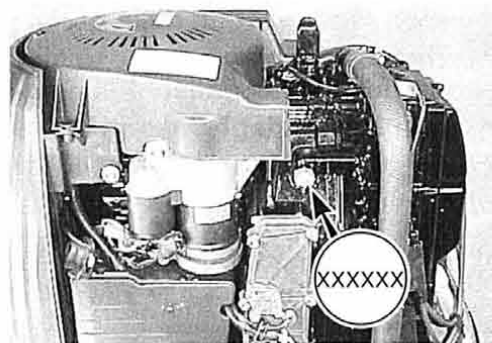
MODEL, PREFIX, SERIAL NUMBER

The MODEL, PREFIX and SERIAL NUMBER of the motor are stamped on a plate attached to the clamp bracket.

Example



Typical placement example



ENGINE SERIAL NUMBER

A second engine serial number plate is pressed into a boss on the cylinder block.

FUEL AND OIL

Gasoline Recommendation

Bombardier highly recommends that you use alcohol-free unleaded gasoline with a minimum pump octane rating of 87 (R+M / 2 method) or 91 (Research method). However, blends of unleaded gasoline and alcohol with equivalent octane content may be used.

Allowable maximum blend of a single additive (not combination):

5% Methanol, 10% Ethanol, 15% MTBE

CAUTION

If leaded gasoline is used, engine damage may result.
Use only unleaded gasoline.

Engine Oil

Use only Evinrude/Johnson Ultra Four Stroke Oil or oils that are rated SE, SF, SG, SH, or SJ under the API (American Petroleum Institute) classification system.

The viscosity rating should be SAE 10W-40.

If an SAE 10W-40 motor oil is not available, select an alternative according to the chart at right.

• BREAK-IN (First 10 Hours)

Use only Evinrude/Johnson Four Stroke Oil or SAE 10W-40, API SE, SF, SG, SH, or SJ rating.

