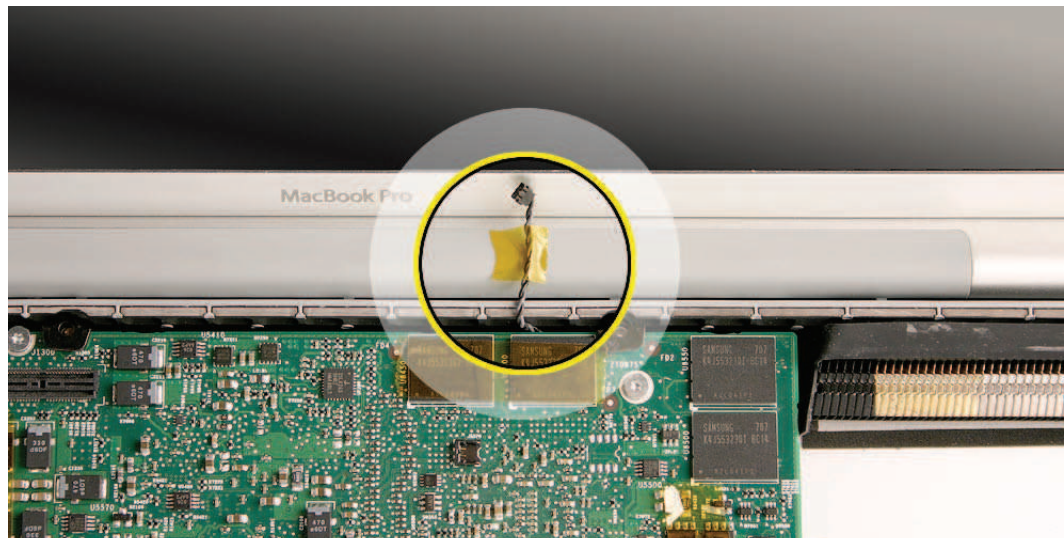


2. Tape the thermal sensor cable to the display assembly to avoid trapping it under the logic board and forgetting it during reassembly.



3. Remove nine silver Torx T6 screws and one black Phillips screw just above the right side of the battery bay.

Note: The screw on the upper right corner of the logic board is actually *underneath* the LVDS cable (for which a longer Torx T6 screw was removed in step 1 of this procedure).

