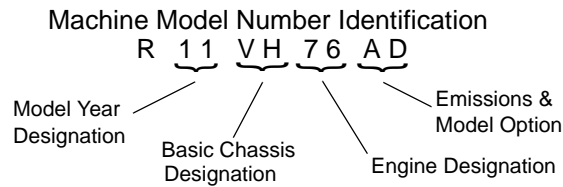


GENERAL INFORMATION

MODEL INFORMATION

Model Identification

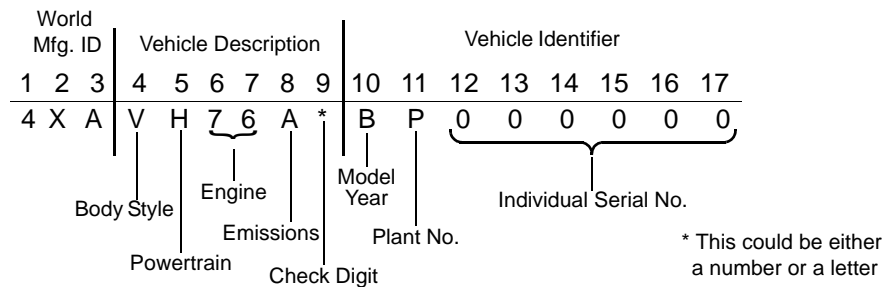
The machine model number must be used with any correspondence regarding warranty or service.



Engine Designation Number

1204276 RZR800HO-11 Twin Cylinder, Liquid Cooled, OHV 4 Stroke, Electric Start

VIN Identification



Vehicle and Engine Serial Number Location

Whenever corresponding about a Polaris ORV, refer to the vehicle identification number (VIN) and the engine serial number.

The VIN can be found stamped on a portion of the front left frame rail, close to the left front wheel (see Figure 1-1).

The engine model and serial number can be found on a decal applied to the cylinder on the side of the engine (see Figure 1-2).

